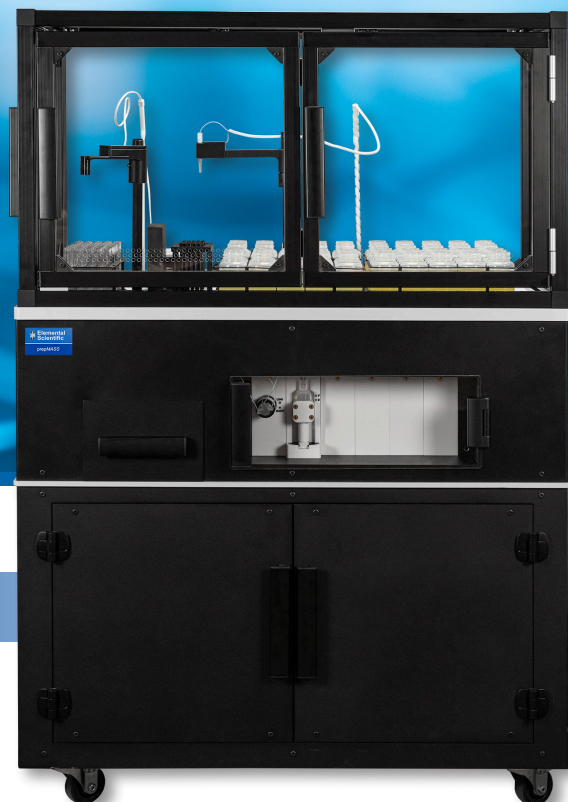


# prepMASS Station

## Automatic Gravimetric Dilution System

Precise by weight dilution, with solutions for sample density and viscosity variations



## Features & Benefits

- **Automated Gravimetric Dilution**
  - Decrease sample preparation time
  - User-Friendly software with touchscreen interface
- **Accurate, Repeatable, and Flexible Results**
  - Accurate: <3% RE on ICP data for prepared calibration curves
  - Repeatable: <1% RSD on dilution factor over 4000 samples
  - Flexible: <1% RSD on DF for samples up to 1000 cSt
- **Optional Heated Deck**
  - Easily load oil samples with high viscosity
  - Prevent clogs and minimize maintenance when completing preparation

## Dimensions and Optional Additions

	Base System	Base System with Cart	Base System with Enclosure	Base System with Cart and Enclosure		Destination	Source
<b>System Dimensions</b>					<b>Large Racks</b>	N/A	4
<b>Height</b>	30" (762 mm)	57.4" (1458 mm)	35.3" (897 mm)	62.7" (1593 mm)	<b>Maximum Sample Capacity</b>		
<b>Width</b>	40" (1016 mm)	40" (1016 mm)	40" (1016 mm)	40" (1016 mm)	<b>50 mL</b>	16	84
<b>Depth</b>	22.8" (579 mm)	22.8" (579 mm)	22.8" (579 mm)	22.8" (579 mm)	<b>15 mL</b>	40	240
					<b>8 mL</b>	60	360

A wide variety of customization options, including a Bar Code Scanner and an option to heat samples, make sample loading easy.

# prepMASS Station Features

## Vial Gripper Arm

Transfers sample tube between scale and destination rack

## Pipette Removal Station

Ejects tips after sample dispense

## Destination Rack

Holds empty tubes and diluted samples

## Digital Scale

Measures weight of vial, undiluted sample, and diluted sample

## Pipette Rack

Holds clean tips for sampling

## Pipette Arm

Sampling and diluent delivery

## Liquid Level Sensor

Determines fluid level in source vial before sampling

## Source Racks

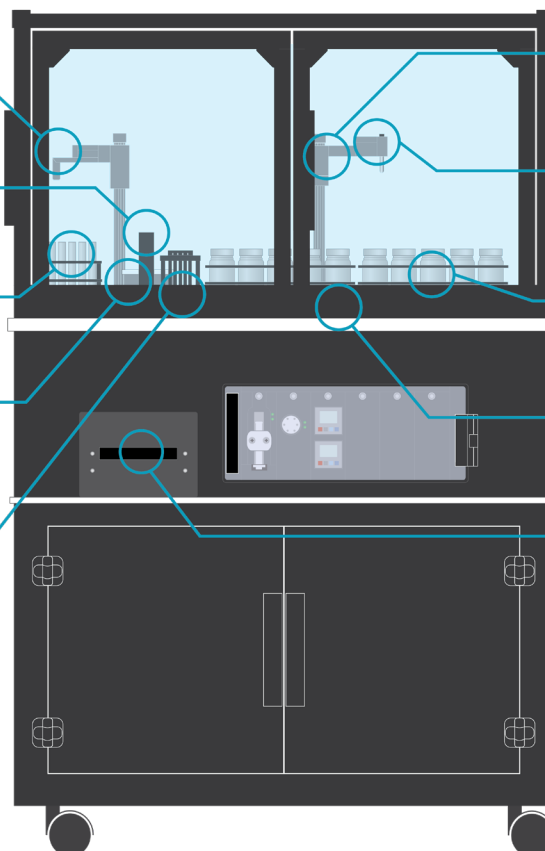
Holds undiluted samples

## Autosampler Deck

Can be heated to reduce sample viscosity

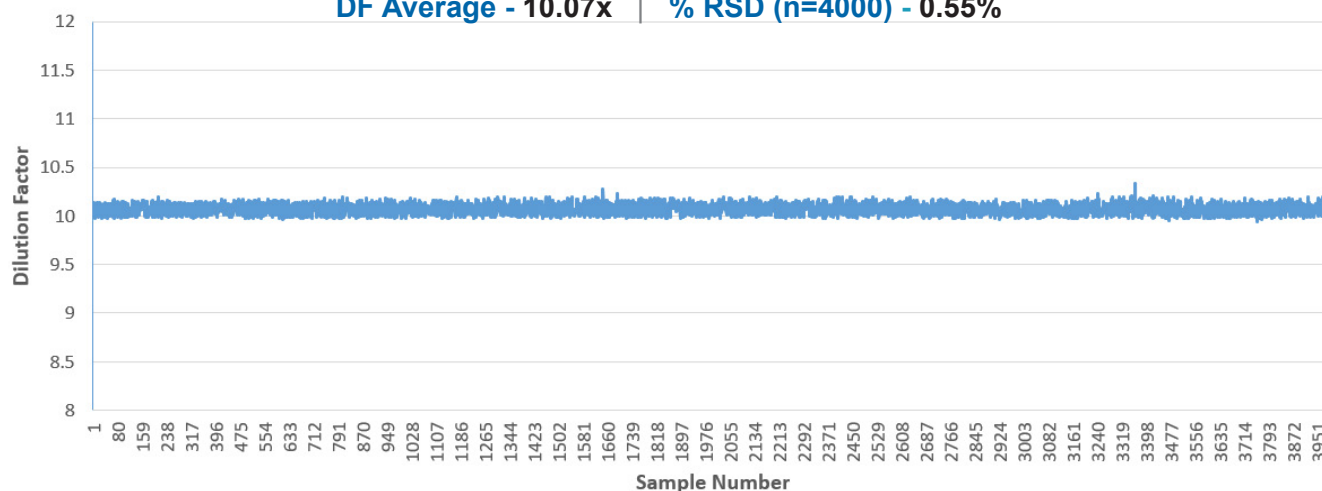
## Pipette Disposal Drawer

Collects used pipette tips



# prepMASS Station Accuracy

DF Average - 10.07x | % RSD (n=4000) - 0.55%



prepMASS Station dilution results demonstrating accuracy and repeatability for weight/weight dilutions. 4000 samples of 100 cSt engine oil were diluted 1:10 in V-Solv over a 3 week period, resulting in highly accurate and repeatable performance for dilutions. Total sample weight was 1g.



© Elemental Scientific | 7277 World Communications Drive | Omaha, NE 68122  
Tel: 1-402-991-7800 | sales@icpms.com | www.icpms.com

F-24164